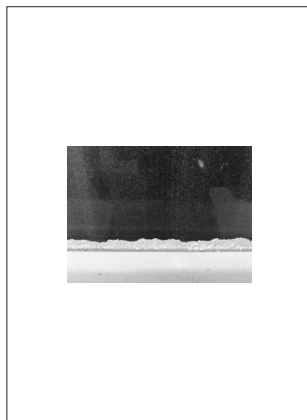
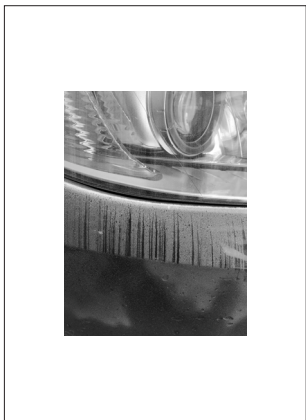
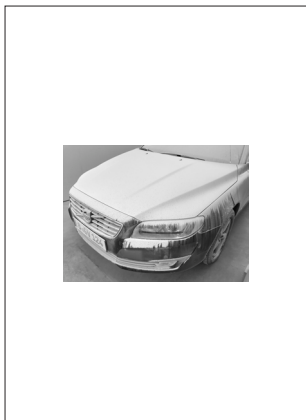
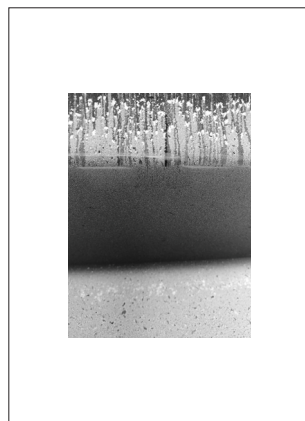
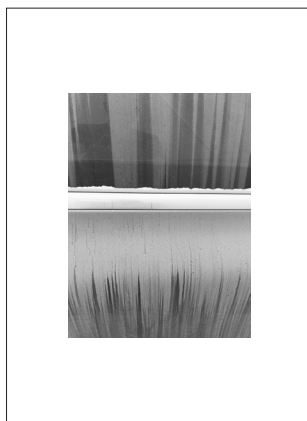
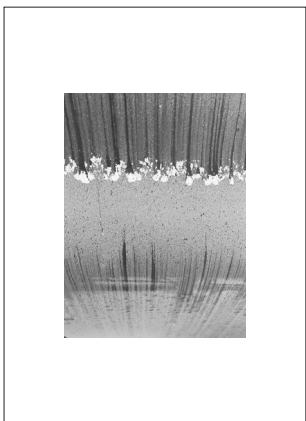
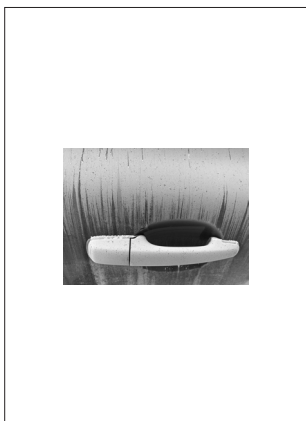
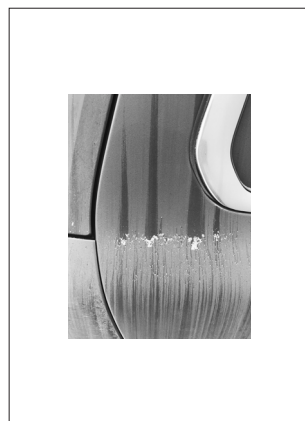
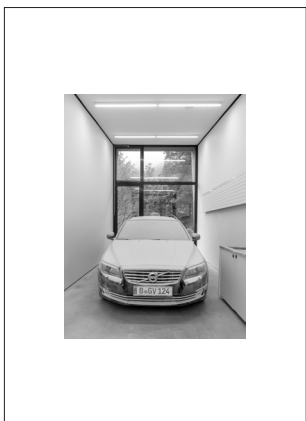
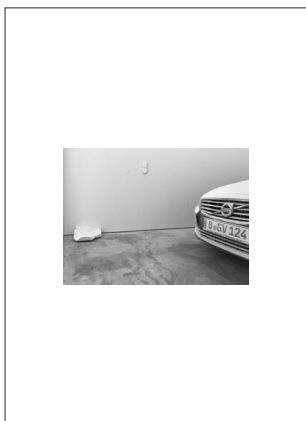


FRITZ BALTHAUS, VOLVO SOTTO MARMO Centro Interazionale di Scultura, Peccia, Ticino CH, 2019/24

Ci sono situazioni con un colon: durante la prima visita di Fritz Balthaus a Peccia, un'auto sportiva aperta era parcheggiata accanto a un blocco di marmo che veniva lavorato con una smerigliatrice angolare. Per evitare che la nuvola di marmo in avvicinamento spolverasse completamente l'auto, il proprietario la portò rapidamente altrove. Questa situazione diede origine all'affermazione del futurista Marinetti secondo cui „un'auto da corsa sarebbe stata più bella della Nike di Samotracia“ scolpita nel marmo. In uno degli studi di scultura del CIS, Fritz Balthaus sta ora amalgamando marmo e lamiera macinando un blocco di marmo di Peccia e facendo scomparire la propria auto sotto uno strato di polvere di marmo bianco.

There are situations with a colon: on Fritz Balthaus' first visit to Peccia, an open-top sports car was parked next to a block of marble that was being worked on with an angle grinder. To prevent the approaching cloud of marble from completely dusting the car, the owner quickly drove it somewhere else. This situation gave rise to the futurist Marinetti's assertion that „a racing car would be more beautiful than the Nike of Samothrace“ carved in marble. In one of CIS's sculpture studios, Fritz Balthaus is now amalgamating marble and sheet metal by grinding down a block of Peccia marble and making his own car disappear under white marble dust..



ORIGINAL

VOLVO SOTTO MARMO, Peccia, Ticino CH, 2019/2024, Künstler/Artist Fritz Balthaus
Dieses Original besteht aus 12 Fotografien und einer Skulptur aus Marmor
This work consists of 12 photographs and a white marble sculpture
1 Fotoserie / photo series, 12 Motive auf Photo Rag 500, Motivmaß 24cm x 31cm /
12 motifs on Photo Rag 500, motif size 24cm x 31cm, Büttenpapier 500g/qm, säurefrei /
scooped paper 500g/sqm, acid-free, Festeinrahmung in Erlenholz, seidenmatt / Fixed framing
in alder wood, silk matt, Rahmenmaß 25,1cm x 32,5cm / frame size 25.1cm x 32.5cm, Mu-
seumsglas AR70 2mm / Museum glass AR70 2mm

EDITION

VOLVO SOTTO MARMO, Peccia CH 2019/2024, Künstler/Artist Fritz Balthaus
Diese Edition besteht aus 12 Fotografien / *This edition consists of 12 photographs*
Fotoserie / photo series, 12 Motive auf Photo Rag 500, Motivmaß 24cm x 31cm /
12 motifs on Photo Rag 500, motif size 24cm x 31cm, Büttenpapier 500g/qm, säurefrei /
scooped paper 500g/sqm, acid-free

Edition 3expl/1e.a. / 3 copies/1e.a.